

Thames High School

Te Kura Tuarua o Te Kāuaeranga



Kia kōtahi ai te piki ake, kia ikeike rawa ki te taumata

We grow together to achieve one's true potential.



Option Selection 2023 for 2024

OCTOBER 2023



Options are important

- ❖ MAKE YOUR CHOICES WISELY AS THE TIMETABLE IS MADE BASED ON YOUR OPTIONS **NOW** (not in 2024)
- ❖ We try to get most people most of their options but that is never 100%
- ❖ That's why you will need to choose "back up" options
- ❖ You should NOT EXPECT to change your mind in 2024...CHOOSE CAREFULLY
- ❖ The timetable is limited in flexibility (a computer tries to get the best fit for as many people as possible!)

Timeline

Term 4, Weeks 1 – 2 Year 9 & 10 Rōpū and Years 11 & 12 Whānau

- ❖ Discussion about options (this PowerPoint & and Q and A)
- ❖ Explore options on School Point: <https://thames.schoolpoint.co.nz/>
- ❖ "Favourite" the ones you need / like (this is a shortlist)
- ❖ Talk to all the right people.

Term 4, Week 2

- ❖ By **Wednesday 18 October** Years 10-13 option selections for 2024 must be completed in School Point
- ❖ Any follow up required will be in the following two days.

Where do you get help?

Whānau/Rōpū Sessions

Careers modules have been available to do this year

Careers Expo – earlier this term

Look at the www.careers.govt.nz website – careers/courses

- there is a great information linking careers with NCEA subjects needed

Option information – **Weeks 1-2 Term 4** (this presentation!)

Look at the information on School Point

Get advice from your Whānau/Rōpū kaitiaki

See our Careers advisor, Mrs Donovan about your pathways

Talk to your Kaiāwhina – get their advice

Talk to your parents/caregivers – what do they suggest / want?

On Wednesday 11 October (Week 1)

- An Information Evening in the Library for whānau
 - How NCEA works for parents/caregivers
 - 6 pm – 7.30 pm.
 - Help with selecting options
- Speak to your kaiako and / or your Kaiāwhina if you have any questions at all!

Year 10

Compulsory subjects

Whole year courses:

English, Maths, Science^{***}
and Social Studies^{**}

Term rotations^{*}:** Health,
Physical Education, Digital
Financial Literacy and
Tikanga / Te Ao Māori

FOUR options – two per semester (two terms).

The options are subject to change from year to year. ^{***}

^{***} three periods per week

^{**} two periods per week

Year 10 Options

Choose FOUR and have a TWO “back-ups” from

- Sport Studies
 - Drama
 - Cirque
 - Kai (Food Technology)
 - Materials Processing (Wood / Metal tech)
 - Creative Materials (Textiles/Fabrics)
 - Kapa Haka (Tikanga)
 - Opportunities
 - Music
 - Art
 - Enterprise
 - **Languages**** (online)
 - French; or
 - Spanish; or
 - Japanese
- ** Whole year course

Subjects (All L1, 2 & 3 unless stated)

Visual & Performing Arts

Art (ART)
Visual Art Design (VAD)
Drama (DRA)
Photography L2 – L3
Music (MUS)
Te Ao Haka (TAH)

English

English (ENG)
Communications (COM) L2-3

Mathematics

Mathematics (MAT) L1-L2
Statistics (STA)
Calculus (MTC) L3

Social Sciences

Geography (GEO)
History (HIS)
Economics (Online only)
Business studies (Online only)

Languages

Te Reo Māori (TRM)

International Languages (Online only)

French, Japanese, Spanish, Chinese

Health and Physical Education

Physical Education (PED)
Outdoor Education (OED) L2-3
Health Education (HED)

Sciences

Science L1 and L3 (SCI)
Horticulture (HTC)
Biology (BIO) L2-3
Chemistry (CHM) L2-3
Physics (PHY) L2-3

Other online courses

Psychology (Online only)
Philosophy (Online only)
Computer progr / Game design (Online only)

Vocational Department

Gateway (GTWY) L2-3 – course + experience

WINTEC courses (WTS) L2-3

TRADES (TRA) L2-3
Construction and Infrastructure
Building and Construction
Electrical Engineering
Mechanical Engineering
Hairdressing and Beauty

Distance Courses

Early Childhood Education (ECE) L2-3
Tourism (TSM) L2-3

Technology

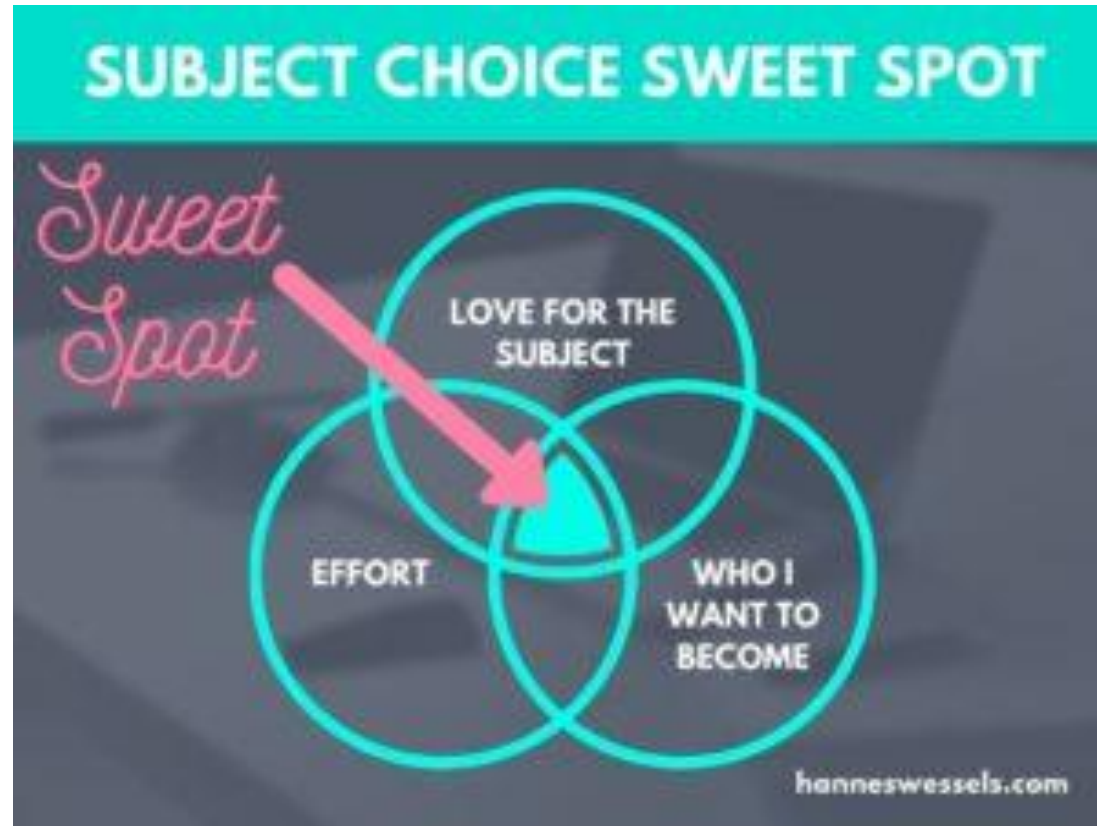
Food and Hospitality (HOS)
Materials Tech: Wood / Furniture (FUR)
Materials Tech: Metal / Mech Engineering (MEC)
Fabric and Design (FAD)
Digital Tech - website design etc. (DTC)
Design and Visual Communication (Online only)

Using School Point

Using the link you have been sent – to both you and your parents on Tuesday 10 October– explore SchoolPoint (<https://thames.schoolpoint.co.nz/>)

- Explore the options available at your level
- 'Favourite' your choices
- Discuss with your whānau, your teachers, the careers advisor etc.
- Make your final selections next week after...

What makes a good choice?





Plan your career

Job profiles

Tools

Job hunting

Study and training

Resources

Choose, improve or change careers

Explore our 400+ job profiles

Get career ideas and write your CV

Get tips on finding work

Browse study, training and scholarship information

Information for educators, career advisors and whānau

Improving career outcomes

Te whakapai ake i ngā hua o ngā kōwhiringa ā-mahi

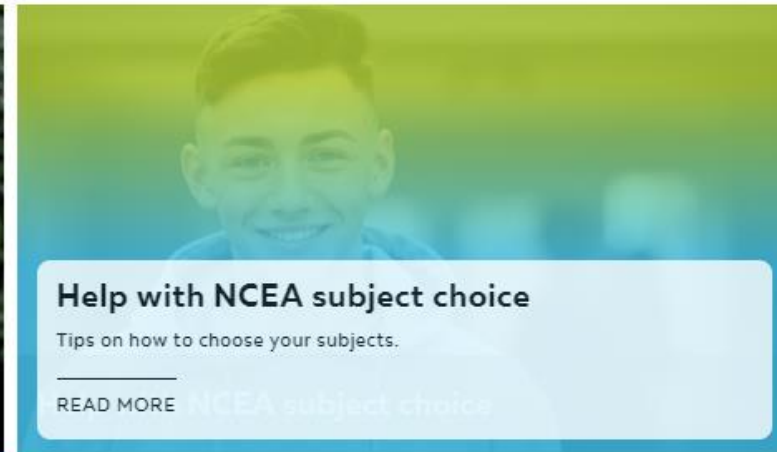
How to find a new job or choose a new career.



Career inspiration and job hunting support



Help finding a job

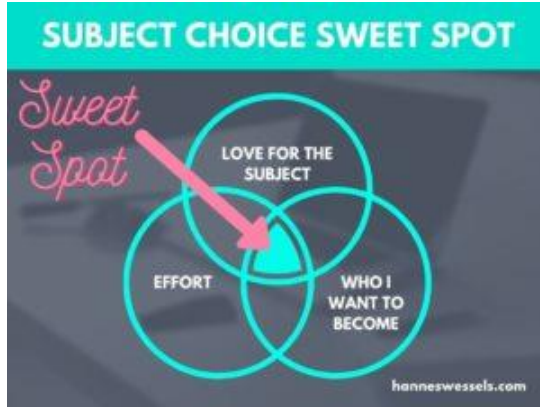


Help with NCEA subject choice

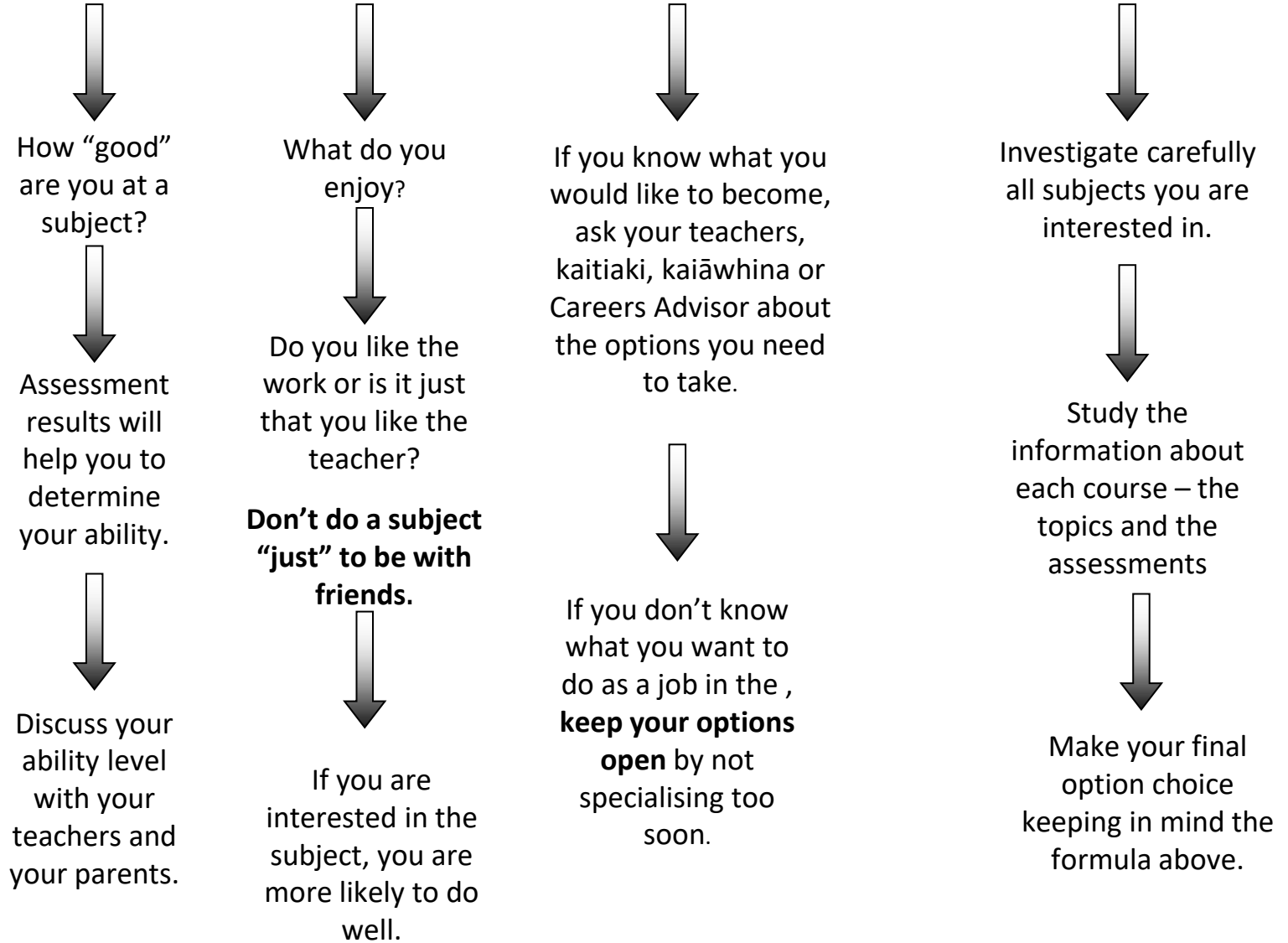
Tips on how to choose your subjects.

[READ MORE](#) NCEA subject choice

How?



$$\text{Ability} + \text{Interest} + \text{Career/Job} = \text{Option Choice}$$



Linking subjects to 'jobs'

<https://www.careers.govt.nz/articles/how-to-pick-ncea-subjects-for-future-success/>

1. Use tools on www.careers.govt.nz to find jobs you may enjoy
 - [Career Quest](#)
 - [Subject Matcher](#)
 - You can also talk to our career adviser
1. Narrow down their choices by learning more about each job
2. Check the opportunities for the jobs they like
3. Check the subjects for the job they want to focus on
4. Choose the subjects that suit the job(s)

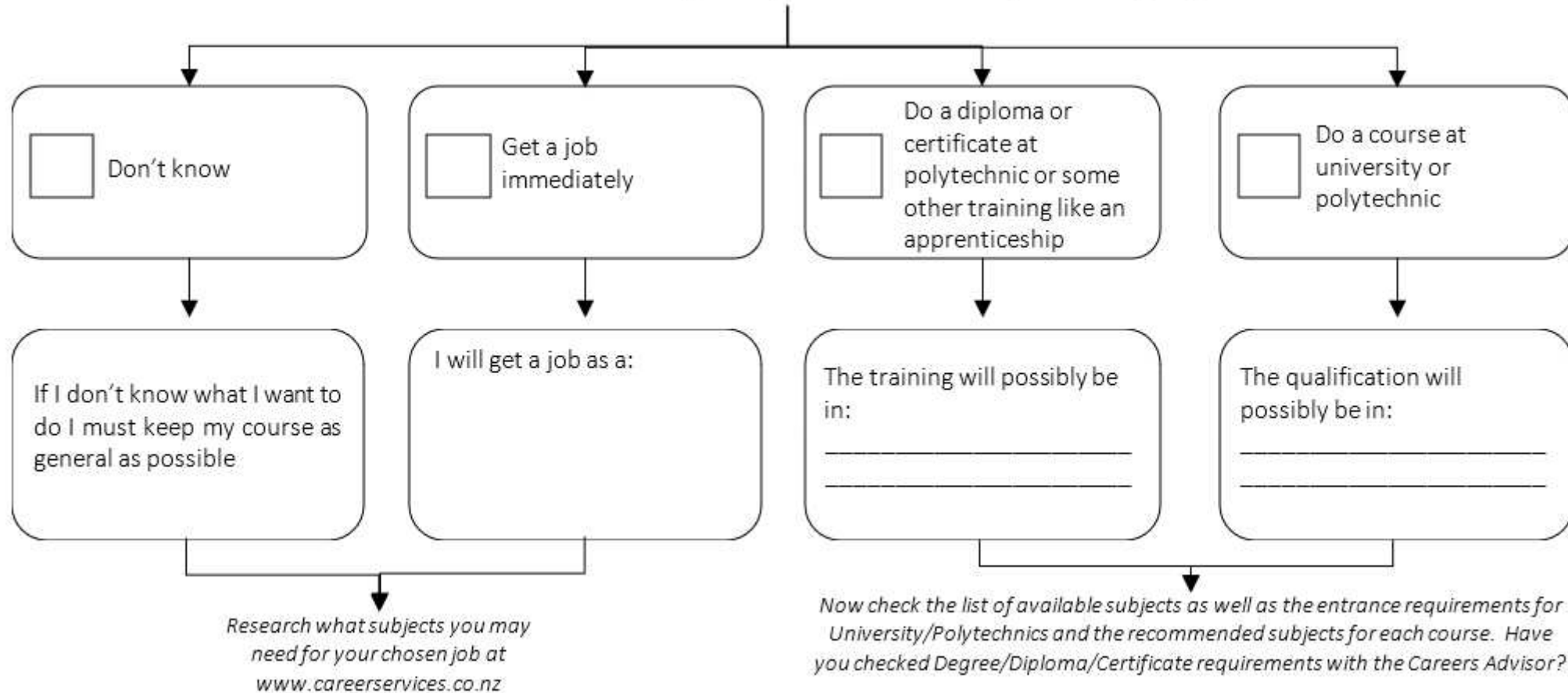
How to pick NCEA subjects for future success



Help your young person choose the best NCEA subjects.

Work backwards if you can

When I leave school, I hope to..... (choose one path)



Work backwards if you can

- If you know what you need to study at **Year 13 / Level 3**, work out what you then study at Year 12 to be ready for Level 3
- etc.

WORKING BACKWARDS

For this plan to work I will need to take the following subjects in **NCEA Level 3**:

1 _____

2 _____

3 _____

4 _____

5 _____

So I will need to take the following subjects in **NCEA Level 2**:

1 _____

2 _____

3 _____

4 _____

5 _____

6 _____

And I will need to take the following subjects in **NCEA Level 1**:

1 ENGLISH

2 MATHEMATICS

3 SCIENCE

4 _____

5 _____

6 _____

What's needed for NCEA and UE?

NCEA Level 1 - 60 cr from level 1 or above + **CO-REQUISITE**

NCEA level 2 – 60 cr L2 or + **CO-REQUISITE**

NCEA level 3 – 60 cr L3 or above + **CO-REQUISITE**

***PLUS: 20 cr CO-REQUISITE** (no NCEA without this)
10 cr literacy (5 reading and 5 writing) and 10 cr numeracy at level 1

UE – University Entrance - Level 3 NCEA with at least 3 APPROVED SUBJECTS with 14 cr or more (“buckets”) + **UE literacy (level 2 or above) and UE literacy (L1)**

UE Literacy (5 cr Writing; 5 cr Reading) and **US Numeracy** 10 cr+ L1 Numeracy

The co-requisite



- From 2024 this is compulsory
- For 2024 and 2025 there are TWO ways to earn the co-requisite
 - (1) Complete the common assessment activities (CAA) – three assessments: numeracy (10 cr), reading (5 cr) and writing (5 cr). Digital exams held TWICE a year (June / October)
 - (2) Earn credits from a select list of literacy-rich or numeracy-rich standards that may be part of a course. Credits from these can only be counted once – either for co-requisite or towards your minimum 60 cr
 - (3) OR a combination of (1) and (2)!

NCEA Level 1 transitional option

(an additional option available 2024 and 2025 only)

Course 1		
Course 2		
Course 3		
Course 4		
Course 5		
	60-credit certificate	20-credit co-requisite

Key

-  Standard from additional list used to assess te reo matatini or literacy
-  Standard from additional list used to assess pāngarau or numeracy

Standards that can count towards co-requisite

Standards that are 'literacy rich'

- Te Reo Māori (1.1 to 1.4; 2.1 to 2.5; 3.1 to 3.5)
- English (1.1 to 1.4; 2.1 to 2.10; 3.1 to 3.9)
- Commerce (1.3, 1.4)
Geography (1.1, 1.3, 1.4)
History (1.2, 1.3, 1.4)
Religious Studies (1.1 to 1.4)
Social Studies (1.1, 1.3, 1.4)
- Agricultural and Horticultural Science (1.1)
Chemistry and Biology (1.3)
Science (1.1, 1.4)

Standards that are 'numeracy rich'

- Mathematics and Statistics (1.1 to 1.4; 2.1 to 2.14; 3.1 to 3.15)
- Commerce (1.1)
- Geography (1.2)
- Physics, Earth, and Space Science (1.4)
- Pāngarau (1.1 to 1.4, 2.15, 2.16)

Many of these standards EXTERNAL STANDARDS
Exceptions include internal standards in – Maths, English, Te Reo Māori, Geography.

Remember

- Understand pathways and ensure that you have mapped out your course for next year and beyond
- All students must have a **full course**
- Poor decisions now may lead to changes and disruption and poor outcomes later or a slower pathway
- Make informed decisions
- Be realistic
- Ensure that you have a backup plan should you not be able to go with your first choice

More thoughts on your course

- Do you have the right previous subject knowledge / experience (i.e., have you studied the right subjects in the past) and / or are highly motivated to do the course (and 'catch up')?
- Do I have a course that “keeps my options open” for the future?
- Am I choosing a course that I need, rather than an 'easy' course? i.e. needed credits not easy credits
- A good course is more than just credits, learning and motivation are very important
- **Ensure** that you have a course that enables you to get NCEA 1-3, UE, as appropriate
- What is your likelihood of achieving the required number of credits given results in internals etc.
- What is the internal / external credits mix?

Thames High School

Te Kura Tuarua o Te Kauaeranga



Kia kōtahi ai te piki ake, kia ikeike rawa ki te taumata

We grow together to achieve one's true potential.



*We grow together to achieve
one's true potential*

*Kia kōtahi ai te piki ake,
kia ikeike raw ki te taumata*